



**SPECTRUM
PROJECT**

UNI / University of
Northern Iowa

presents



SPECTRUM 2024

SUNDAY, APRIL 14, 2024

2:00 PM

Gallagher-Bluedorn Performing Arts Center

University of Northern Iowa

FREE ADMISSION

SpectrumProject.org

Art credits for 2024 season logo - Ella De Haan & Tatiana Schaapherder

WHAT IS THE UNI SPECTRUM PROJECT?

A Saturday program that combines music, movement, drama and art for children with differing abilities. Activities use the performer's ideas with direction from UNI students.

Our performers come from the Cedar Valley and as far away as Des Moines. We range in age from 5 to 20 and meet each Saturday beginning in January.

Buddies in the Spectrum Project are students from UNI, Allen College and Hawkeye Community College. They volunteer each weekend to work with our performers to get ready for the show today. Buddies can be from any major.

The Spectrum Project is a continuation of efforts to provide performing arts experience for children with differing abilities in the Cedar Valley. This effort began with Spectrum Theatre, founded by UNI Theatre Professor Gretta Berghammer in 2012. The Spectrum Project is modeled after the Ball State *Prism Project*, founded by Ryan and Amy Hourigan in 2009 at Ball State University in Muncie, Indiana.

This project is supported through the UNI School of Music and community supporters.

2025 SPECTRUM PROJECT!!!

Performer registration and Buddy applications open:

October 1, 2024

First rehearsal - January 25, 2025

Register at spectrumproject.org

Link to Pre-show Slideshow - <https://youtu.be/QhIWGPFL4UY?si=eVM8p2s4ezrgHO4Z>

Program

ONCE UPON AN ADVENTURE

<i>Away we go</i>	Red Group
<i>Life is a Highway</i>	Blue Group
<i>Rock You Like a Hurricane</i>	Gavin Westemeier with Band
<i>Roadtrip Gone Wrong</i>	Blue Group
<i>Let it Go</i>	Purple Group
<i>Rocketeer</i>	Gold Group
<i>Candy Planet</i>	Gold Group
<i>Walking on Sunshine</i>	Purple Group
<i>Playland</i>	Purple Group
<i>Magic</i>	Red Group
<i>Crocodile Rock</i>	The Crocodiles
<i>Superhero Video Game</i>	Red Group
<i>Billy Battle</i>	Blue Group
<i>Come Alive</i>	The Dreamcatchers
<i>Best Day of My Life</i>	Gold Group
<i>Curtain Call</i>	All Groups

PURPLE GROUP



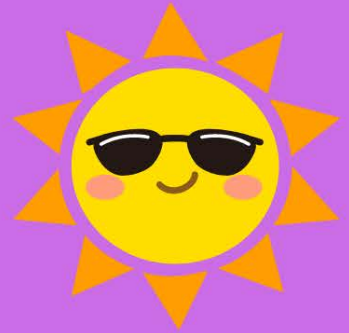
RAY HANGARTNER



CLARK KOSTNER



JAYCEE SCRIBNER



MAX SCRIBNER



DANIEL VALIEV



JAYLYNN WESTEMEIER



ABBY ADAMS
Elementary Education,
Social Emotional
Learning



SYDNEY BERG
Communication
Science and Disorders



**JAYLYNN
EASTERLY**
Communication
Sciences and
Disorders



SARAH KLEMS
Social Work



**NATALIE
POTHOVEN**
Communication
Sciences and Disorders



MADI MCAVAN
Communication
Sciences and Disorders,
Psychology



KEELEA NAVARA
Art Education, Psychology
and Mental Health



KATE VANGORP
Instrumental Music
Education

GOLD GROUP



NORA ACKERSON



SOPHIA ALLEN



CARTER DROSTE



MACKENZIE ENGEL



ZANDER HORNER



ZA'NYA JORDAN



BRYNLEE MARTIN



TUCKER MCDONALD



SAMUEL O'CONNER



SHUNYE WORTHAM



ORSON WOOD



SYDNEY BERG
Communication Science and
Disorders



MADDIE DOLAN
Communication Sciences and
Disorders



BETHANY EHMCKE
Early Education



**ANDREA
GRUNDON**
Elementary Education &
Middle Level Education,
TESOL



ILSE HOOPER
TESOL/Spanish Teaching,
French Language Studies



RILEY HOWARD
Psychology, Mental Health



**SHANNON
MARLEY**
Early Childhood Education,
Special Education



KRISTINA MOORE
Communication Sciences and
Disorders



ISABELLE NELSON
Comprehensive Secondary
Science Teaching



**SYDNEY
PETERSON**
Social Work, Public Health



OLIVIA WENGER
Actuarial Science, Data
Science



RED GROUP



LILLY BLACKBURN



STEVEN BRAND



BRITTANY BRAND



QUINN CHILDERS



SAM HARBAUGH



EMERI MERRICK



NOAH OCONNER



PAETRA SAUER



ANNIE SHORES



GAVIN WESTEMEIER



BRIANNA BLASNITZ
Biochemistry, Biology



ANNA GIRTEN
Biology, Psychology



ABBIE HORWITZ
Family Services, Social Welfare



MICAIAH KRUTSINGER
Choral Music Education
Spectrum Buddies
President



SAMMIE MCDONALD
Social Work, Ethics



ELLIANA NELSON
Choral Music Education



EMMA RAAB
Social Work



BRENNAN REGAN
Choral Music Education



TRISTA THOMPSON
Elementary Education,
Special Education and
Mental Health



LILLIAN WHEELER
Psychology Mental Health

BLUE GROUP



REBEKAH BENTLEY



SHELBY BLAKE



JOSEPH ELSER



DAYTON JENSEN



MAYA JENSEN



KAYLA MCCORMICK



CATIE POLOK



JOSHUA SCHMIDT



JAVAN WEGENER



ROSE WOLFF



THOMAS YOUNG



TAYLOR BENNETT

Recreation, Tourism and Nonprofit Leadership, Psychology



JULIANA BECERRA

MM Music Education



ELIZABETH BURGER

Early Childhood Education, Special Education



MYKAELA GRAHAM

Elementary Education, Social Emotional Learning



EMMA HARLE

Early Childhood Education, Special Education



EMILI JOHNSON

Elementary Education, Special Education



COLLIN RICHARDSON

Exploratory, Coaching



HAYDEN SEERING

Biology, Psychology and Mental Health



MORGAN STUMPF

Instrumental Music Education



JENNA WESTENDORF

Digital Media Journalism



ALLY WILSON

Biology, Mental Health



2024 STAFF

ART



**TATIANA
SCHAAPHERDER**
Art Education



ELLA DE HAAN
Art Education

DANCE



**KIMBERLY
WALJASPER**
Math Teaching,
Special Education,
Spectrum Buddies
Vice President



**KAYLYNN
RUFFIN**
Business and
Communications

MUSIC



ABBY WENDLAND
Instrumental Music
Education



BROCK TRENKAMP
Choral Music
Education

DRAMA



KIERA JACKSON
Elementary Education,
Special Education



SARAI CORTES
Art Education

SUPPORT TEAM



ALEXIS COOLEY
MS Occupational
Therapy, Allen College



JAMIE KNOX
Choral Music Education,



ANN MARIE MILLER
Cedar Falls Community
Schools, Special Education



SARA PETERSEN
Communication Sciences &
Disorders
Spectrum Buddies Treasurer



LIZZY RICHARDSON
MS Occupational Therapy, Allen
College

THE BAND

From the UNI School of Music



**Matthew
Andreini**

Assistant Adjunct
Professor of
Percussion



**Jeffrey
Brich**

Assistant Professor of
Instruction in Voice



**Mike
Conrad**

Assistant Professor of
Jazz Studies/Music
Education



**Caroline
Francis**

Communications and
Operations Coordinator



**Jonathan
Schwabe**

Professor of Theory
and Composition



Luke Sanders

Assistant Adjunct Professor
of Guitar

Spectrum Project Foundation

Donations to the Spectrum Project can be made through the UNI Foundation. The UNI Foundation is a 501(c)3 with the mission to grow and sustain private resources and build relationships to support the University of Northern Iowa, its students, faculty, staff and programs. Gifts can be in the form of cash, planned giving, securities & stock or property.

<https://foundation.uni.edu>

UNI University of Northern Iowa Sign in or create donor account

College of Humanities, Arts and Sciences

The College of Humanities, Arts and Sciences offers a host of dynamic majors in the arts, humanities, mathematics, sciences and technology. CHAS majors enjoy the best of two worlds: the advantages of a large university (a variety of programs and the latest technology) with the benefits of a private college (small classes and close connections to faculty). Several major projects are identified below. To donate to one or more of these projects, simply enter the donation amount in the box to the left of the project number. Your support is greatly appreciated!

Amount *
\$

Make this gift recurring

Designation
Spectrum Project ✕

+ Add Another

By selecting "Make this Gift Recurring" your payment method will be charged each month for the amount indicated above.

Name *
First, MI, Last Name ☰

Email *
Email

Street address *
Street address

City *
City

DONATE

A SPECIAL THANKS

Tom Barry

Audio Engineer, UNI School of Music

Ralph Bryant, Katherine Lampman, Lysie Maynard and Jolene Whitcomb

Lincoln Elementary School CFCS

Caroline Francis

Marketing Manager, UNI School of Music

Jennifer Cooley

Interim Dean, College of Humanities, Arts and Sciences

Melinda Boyd

Interim Director of UNI School of Music

Amy and Ryan Hourigan

Ball State Prism Project

Chris Kremer, Aharon Moody and Chris Tuzicka

Gallagher-Bluedorn Performing Arts Center

Tammy Hook, Sara Hunter and Kelsey Williams

UNI School of Music Office

Copyworks

Cedar Falls

Stephanie Altoff

Xpressions Screen-printing and Embroidery

Jennifer Garrett

UNI Speech-Language Pathology, UNI

Kendra Kahl

Assistant Professor of Instruction

Wendy Miller

Associate Professor of Art Education, UNI

Sandy Nordahl

Technical Director, UNI School of Music

Mark Nook

President, UNI

Henry Pugh

Custodial Services, Russell Hall, UNI

Michelle Weber

Cedar Falls Community Schools

Shelley & Kevin Droe

Spectrum Project Coordinators

Thank You to All Spectrum Buddies and Staff, Past & Present



Spectrum JamFest is May 18, 2024 in downtown Cedar Falls. Spectrum JamFest is an outdoor live music event showcasing local youth and school bands (rock, country, hip-hop, pop, metal, punk, alternative, etc.). Proceeds and donations go to support the **UNI Spectrum Project**.

MANDY HARVEY is back! to headline the 2024 Spectrum JamFest. Mandy is a singer, songwriter, author, and speaker who happens to be deaf. Mandy was Simon Cowell's "Golden Buzzer" pick on America's Got Talent. The video has collectively received over 500 million views. Mandy uses her talents and artistry to encourage others which can be seen by her many acts as part of nonprofit organizations such as No Barriers USA. At Spectrum JamFest, students will be invited onstage to sing and play the ukulele with Mandy.



MANDY HARVEY

- ▶ Bring a lawn chair & blanket
- ▶ Enjoy the food from local vendors
- ▶ Buy raffle tickets and win cool stuff
- ▶ Play ukulele with Mandy Harvey
- ▶ Rock out with Cedar Valley young musicians
- ▶ **Support Spectrum Project**

Rain date: Sunday, May 19, 2024

LOOKING FOR SPONSORS AND RAFFLE DONORS!

Is your Business or Organization Interested in being a JamFest sponsor or donate to the Raffle? - [GO HERE](https://forms.gle/9ovbTBYduyTJ9wHe7) - <https://forms.gle/9ovbTBYduyTJ9wHe7>

AMP CAMP

JULY 21-25, 2024

music.uni.edu/ampcamp



**PERFECT FOR
ALL LEVELS &
ALL ABILITIES!**

UNI / University of
Northern Iowa
School of Music

UNI / University of
Northern Iowa

School of Music
115 Russell Hall
Cedar Falls, Iowa 50614-0246

Learn guitar, bass, drumset, keyboard, ukelele, and
singing (instruments provided)

With workshops in...
songwriting, turntablism & producing

Early Registration Fees - Before June 1, 2024

Commuter (Ages 9-11) - \$395*
Commuter (Ages 12-19) - \$415*
Residence (Ages 12-19) - \$660**

Regular Registration Fees - On or after June 1, 2024

Commuter (Ages 9-11) - \$445*
Commuter (Ages 12-19) - \$465*
Residence (Ages 12-19) - \$710**

Registration includes:

- Workshops and master classes
- Band practices with coaches
- Camp t-shirt
- End of camp jamfest concert

For more information...

contact kevin.droe@uni.edu
or visit music.uni.edu/ampcamp

* Includes lunch in a UNI Dining Center

** Includes three meals a day (breakfast, lunch and dinner)



Register - <https://music.uni.edu/ampcamp>

